

Excellent energy efficiency due to maintenance free 3-phase AC drive motor

High performance version for high productivity

Effortless and safe handling with electric JetPilot steering wheel

Various accessories to individually tailor the truck to its application



ECE 225

Horizontal order picker (2500 kg)

The Jungheinrich ECE 225 gives time and cost savings during order picking by combining excellent performance with a multitude of ergonomic advantages.

Its excellent technical capability is underpinned by a 24 V drive motor in 3-phase AC technology. The advantages: powerful acceleration and high top speed; at the same time significant energy saving, extended operating time and low maintenance (no carbon brushes). This is realised through an intelligent set up between the drive motor and the electronic drive controller which are both manufactured by our group.

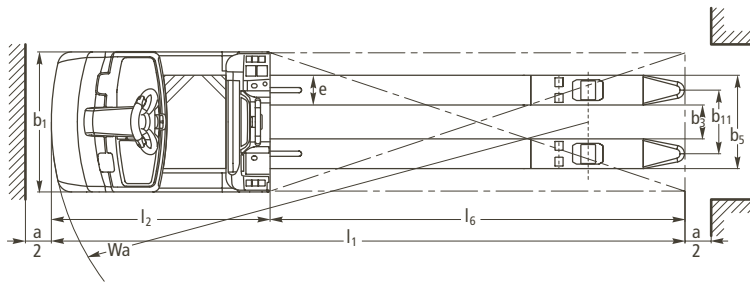
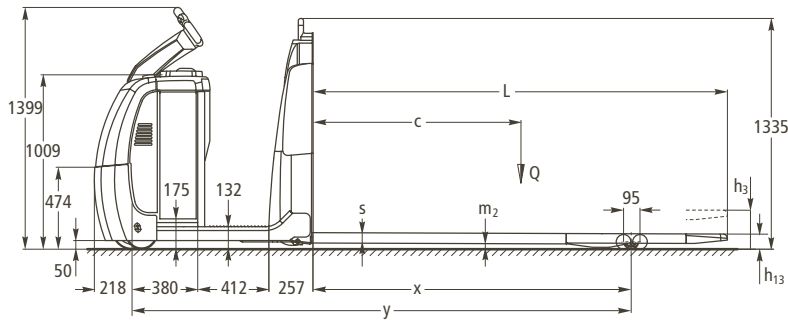
In addition the ergonomic advantages between the operator, truck and load are as follows: The close proximity of operator to the load is crucial for safe and highly productive order picking. The optionally available raising stand-on platform makes order picking easy from the second racking level.

The ECE provides a choice between two different electric steering systems: Tiller steering or JetPilot steering wheel. The advantages of electric tiller steering: effortless steering with only approx. 60° tiller lock for 90° steering lock. Operator and tiller always remain safely within the truck contours. The

advantages of the JetPilot steering wheel: excellent travel comfort due to similar operation as a motor car. No turning of the body in corners (thus reducing pressure on neck and spine) and one-handed operation and automatic return of the steering wheel to straight line travel.

Due to excellent travel performance and optimised workplace, the ECE is able to handle the hardest applications.

ECE 225



ECE 220/225 (mm)							
l	Fork overhang	Capacity (t)	l_1	y^1	Wa^1	x^1	Ast
1000	186	2.0	2267	1863	2081	814	2467
1150	186	2.0	2417	2013	2231	964	2667
1250	186	2.0	2517	2113	2331	1064	2717
1400	186	2.5	2667	2263	2481	1214	2867
1400	560	2.0	2667	1891	2109	842	2867
1450	560	2.0	2717	1941	2159	892	2917
1600	186	2.5	2867	2463	2681	1414	3067
1600	560	2.0	2867	2091	2309	1042	3067
1880	560	2.5	3147	2371	2589	1322	3347
1950	560	2.5	3217	2441	2659	1392	3467
2180	800	2.5	3447	2429	2647	1380	3647
2280	800	2.5	3547	2529	2747	1480	3747
2310	186	2.5	3577	3173	3391	2124	3797
2400	560	2.5	3667	2891	3107	1840	3867
2400	800	2.5	3667	2649	2867	1600	3867
2430	900	2.5	3697	2579	2797	1530	3905
2550	800	2.5	3817	2799	3017	1750	4017
2850	800	2.5	4117	3099	3317	2050	4317
2900	800	2.5	4167	3149	3367	2100	4367
3100	800	2.5	4367	3349	3567	2300	4567

1) with raised load section: values – 89 mm

Technical data in line with VDI 2198 as at: 01/2007

Identification	1.1	Manufacturer (abbreviation)		Jungheinrich	1.1
	1.2	Manufacturer's type designation		ECE 225	1.2
	1.3	Drive		electric	1.3
	1.4	Operator type		order picker	1.4
	1.5	Load capacity/rated load	Q (t)	2.5	1.5
	1.6	Load centre distance	c (mm)	1200	1.6
	1.8	Load distance, centre of drive axle to fork	x (mm)	1600	1.8
	1.9	Wheelbase	y (mm)	2649 ¹⁾	1.9
	Weights	2.1	Service weight incl. battery (see line 6.5)	kg	1114
2.2		Axle loading, laden front/rear	kg	1173/2441	2.2
2.3		Axle loading, unladen front/rear	kg	853/261	2.3
Wheels, Chassis	3.1	Tyres		Vulkollan®	3.1
	3.2	Tyre size, front		230 x 78	3.2
	3.3	Tyre size, rear		85 x 85	3.3
	3.4	Additional wheels (dimensions)		180 x 65	3.4
	3.5	Wheels, number front rear (x = driven wheels)		1 + 1 x/4	3.5
	3.6	Tread, front	b ₁₀ (mm)	485	3.6
	3.7	Tread, rear	b ₁₁ (mm)	340/370/500	3.7
Basic Dimensions	4.4	Lift	h ₃ (mm)	125	4.4
	4.9	Height of tiller in drive position min./max.	h ₁₄ (mm)	1399	4.9
	4.15	Height, lowered	h ₁₃ (mm)	90	4.15
	4.19	Overall length	l ₁ (mm)	3667	4.19
	4.20	Length to face of forks	l ₂ (mm)	1267	4.20
	4.21	Overall width	b ₁ /b ₂ (mm)	810/-	4.21
	4.22	Fork dimensions	s/e/l (mm)	60x170x2400	4.22
	4.25	Distance between fork-arms	b ₃ (mm)	510/540/670	4.25
	4.32	Ground clearance, centre of wheelbase	m ₂ (mm)	30	4.32
	4.34	Aisle width for pallets 800 x 1200 lengthways	Ast (mm)	3867 ²⁾	4.34
	4.35	Turning radius	Wa (mm)	2867	4.35
Performance Data	5.1	Travel speed, laden/unladen	km/h	9.5/12.5	5.1
	5.2	Lift speed, laden/unladen	m/s	0.05/0.06	5.2
	5.3	Lowering speed, laden/unladen	m/s	0.06/0.04	5.3
	5.8	Max. gradeability, laden/unladen	%	6/15	5.8
	5.10	Service brake		electromagnetic	5.10
Electric engine	6.1	Drive motor rating S ₂ 60 min.	kW	2.8	6.1
	6.2	Lift motor rating at S ₃ 15 %	kW	1.5	6.2
	6.3	Battery acc. to DIN 43531/35/36 A, B, C, no		no	6.3
	6.4	Battery voltage, nominal capacity K _s	V/Ah	24/420 (450)	6.4
	6.5	Battery weight	kg	370	6.5
	6.6	Energy consumption acc. to VDI cycle	kWh/h	0.74	6.6
Others	8.1	Type of drive control		AC SpeedControl	8.1
	8.4	Sound level at the driver's ear according to DIN 12 053	dB (A)	67	8.4

1) load section lowered: +90 mm
2) diagonal according to VDI: +94 mm

Make use of the advantages

Innovative 3-phase AC technology

High productivity with reduced operating costs. Here are the advantages:

- High energy efficiency with excellent energy management.
- Powerful acceleration.
- Fast travel direction change without the usual pause.
- No carbon brushes – the drive motor is maintenance-free.
- 2-year warranty on drive motor.

Comfortable travel

The Jungheinrich electronic "SpeedControl" gives comfortable and safe operation with adjustment for every application:

- The required speed is maintained in every travel situation – even whilst ascending and descending gradients.
- 3 adjustable travel programmes for individual adjustment to any application.
- Regenerative braking, reclaiming battery power when the truck decelerates.



Comfortable travel and fast order picking

Robust construction for the hardest applications

- Chassis made of high-quality 8 mm sheet steel.
- Extra high front chassis apron.



Depositing pallets in goods-out

- Torsion-proof fork section with strong pull rods – no deflection even with heavy loads and long forks.

Highest throughput performance

Drive motor and load section are designed throughout for heavy loads and high throughput figures:

- Powerful 2.8 kW drive motor.
- Travel speed 12.5 km/h (9.5 km/h with 2.5 t load).
- Excellent acceleration – an important factor in order picking.
- 2.5 t capacity for up to 3 pallets at the same time.

Long operating times

Energy-saving 3-phase AC technology and large battery capacities gives long operating times:

- Up to 465 Ah battery capacity.

Well informed at any time

Extensive operators display with truck set up functions gives a complete overview at any time.

- "CanDis" (optional) informs on battery charge state, operating hours and fault codes.
- Truck activation via PIN and choice of 3 travel programmes via keyboard (optional).

- Adjustable travel parameters via CanDis and CanCode (optional).

Individual steering

Tailor-made application with selectable steering concepts:

- Electric tiller steering with progressive steering ratio (optional).
- Electric steering with JetPilot.
- Curve Control (optional): Maximum safety with automatic speed reduction on corners.

Additional equipment

Extensive accessories provide individual adjustment to your application requirements:



JetPilot – exclusive to Jungheinrich

- Edging button giving pedestrian operation on both sides of the truck and is located in the backrest.
- Different designs of backrests (also with seat).
- Additional collision protection made of steel and/or rubber.
- Hydraulically raising stand-on platform for frequent order picking from second racking level.
- Other options for working in second level of racking.
- Holder for radio data transmission components.

Jungheinrich UK Ltd.

Head Office:

Sherbourne House · Sherbourne Drive
Tilbrook · Milton Keynes MK7 8HX
Phone 01908 363100
Fax 01908 363180

info@jungheinrich.co.uk
www.jungheinrich.co.uk

Jungheinrich AG
ISO 9001, ISO 14001
Certification of Quality and
Environment Management.



Jungheinrich trucks
conform to the European
Safety Requirements.



JUNGHEINRICH
Well worthwhile